

PCAMS 7.0 Release Notes and Upgrade Instructions

Changes in this release

- New Event Sequencer interface.
- PCAMS installer changes: application is no longer installed in the C:\PCAMSNT directory by default. Program executables and data files now reside in separate locations.
- All executables, libraries, and the installer are now signed with NWL's certificate.

Due to the installation location difference, PCAMS 7.0 will NOT automatically replace or migrate configuration and data files from previous versions of PCAMS. Also, installing PCAMS 7.0 does not automatically uninstall PCAMS 6.x or older – both installations will coexist side-by-side on the same machine until the older version is uninstalled. Please read the “Installation directory changes” section carefully for instructions on how to upgrade an existing installation to 7.0.

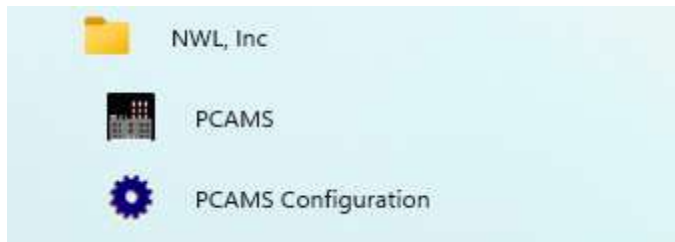
Installation directory changes

Previously, PCAMS installer placed all program files (executables, libraries, configuration, and log files) in **C:\PCAMSNT** by default. This presented a potential account security issue, as many IT departments block applications' access to directories outside of C:\ProgramData, or C:\Users.

Starting from this version, the default location for the program's executable files and libraries is under **C:\Program Files (x86)\NWL\PCAMS**. It is recommended to leave this location unchanged during installation. Typical user account restrictions set by IT departments allow running programs from **C:\Program Files (x86)**.

Program configuration files, the database, and any output files it produces now reside under **C:\ProgramData\NWL, Inc\PCAMS**. No configuration or output files are stored under **C:\Program Files (x86)\NWL\PCAMS**. This location is strictly for executables, access to it is typically restricted, and there is no need to modify anything there after installation.

After PCAMS 7.0 is installed, shortcuts to PCAMS main program and PCAMS configuration utility will be created in the Start menu:



While it is possible to configure most PCAMS settings from scratch using “PCAMS Configuration” utility, the most typical use case will be PCAMS being upgraded from 6.x or an older version. In this case, all configuration files can be manually copied from C:\PCAMSNT.

After installation, the directory structure under **C:\ProgramData\NWL, Inc\PCAMS** will look like this:

A screenshot of a Windows file explorer window showing the directory structure under C:\ProgramData\NWL, Inc\PCAMS. The address bar shows the path: This PC > OS (C:) > ProgramData > NWL, Inc > PCAMS. The main area displays a list of folders and files with columns for Name, Date modified, Type, and Size.

Name	Date modified	Type	Size
Config	4/14/2026 1:41 PM	File folder	
Database	4/14/2026 1:41 PM	File folder	
EventSeqProgs	4/14/2026 1:41 PM	File folder	
RapperProgs	4/14/2026 1:41 PM	File folder	
Reports	4/14/2026 1:41 PM	File folder	
alarm.ini	3/5/2026 3:38 PM	Configuration sett...	1 KB
export.txt	1/11/2017 8:10 PM	Text Document	1 KB
exportdb.txt	5/2/2016 4:22 PM	Text Document	1 KB
USERLOG.TXT	4/14/2026 1:41 PM	Text Document	1 KB

Upgrade instructions to 7.0

1. Install PCAMS 7.0

Run PCAMS 7.0 installer. If an older version of PCAMS is installed on the machine, no changes will be made to it during the installation of version 7.0. As mentioned above, an older PCAMS version and version 7.0 can be installed at the same time as they don't use shared folders for executables or data.

2. *Copy configuration files*

To migrate an existing PCAMS 6.x (or older) configuration, copy the following files from **C:\PCAMSNT** to **C:\ProgramData\NWL, Inc\PCAMS:**

- Copy all *.DAT files from **C:\PCAMSNT** to **C:\ProgramData\NWL, Inc\PCAMS\Config** directory.
- Copy the database (.MDB file from **C:\PCAMSNT\Database**) to **C:\ProgramData\NWL, Inc\PCAMS\Database** directory, if applicable.
- Copy **CUSTOMER.TXT**, **PCAMSNT.LIC**, and all .INI files to **C:\ProgramData\NWL, Inc\PCAMS\Config** directory.
- Copy event sequencer and rapper program files, if applicable, from **EventSeqProgs** and **RapperProgs** in C:\PCAMSNT to **EventSeqProgs** and **RapperProgs** in **C:\ProgramData\NWL, Inc\PCAMS.**

This PC > OS (C:) > ProgramData > NWL, Inc > PCAMS > Config

Name	Date modified	Type	Size
Annunciator.DAT	2/18/2026 3:53 PM	DAT File	1 KB
AuxIO.DAT	3/3/2026 2:08 PM	DAT File	36 KB
AuxIOConf.DAT	3/3/2026 1:10 PM	DAT File	1 KB
AuxloWago750.ini	3/3/2026 2:07 PM	Configuration sett...	1 KB
BaghouseMgmt.DAT	4/14/2026 1:53 PM	DAT File	4 KB
ComPortSetup.DAT	3/3/2026 1:42 PM	DAT File	1 KB
customer.txt	4/22/2025 4:07 PM	Text Document	1 KB
DataExport.DAT	2/19/2026 1:04 PM	DAT File	2 KB
EnergyManagement.DAT	4/14/2026 1:53 PM	DAT File	141 KB
IsoLynx.dat	3/3/2026 1:10 PM	DAT File	3 KB
PCAMSNT.LIC	4/24/2025 2:13 PM	LIC File	1 KB
PcamsViewAuxCfg.DAT	3/3/2026 2:08 PM	DAT File	1 KB
Precips.DAT	3/3/2026 1:42 PM	DAT File	35 KB
security.dat	1/31/2014 3:02 PM	DAT File	3 KB
Session.DAT	4/14/2026 1:53 PM	DAT File	7 KB

3. Reconfigure OPC server (if applicable)

PTC/Keypware's KepserverEX is configured to interoperate with PCAMS by loading PCAMS configuration from file, which is created at PCAMS startup if Kepserver option is enabled (**pcams_opc.xml**).

Previously, the file was created in the application directory (**C:\PCAMSNT**). Starting with this release, the file is created in the application's data directory (**C:\ProgramData\NWL, Inc\PCAMS**). Make sure to reconfigure KepserverEX to use the file in the new location.

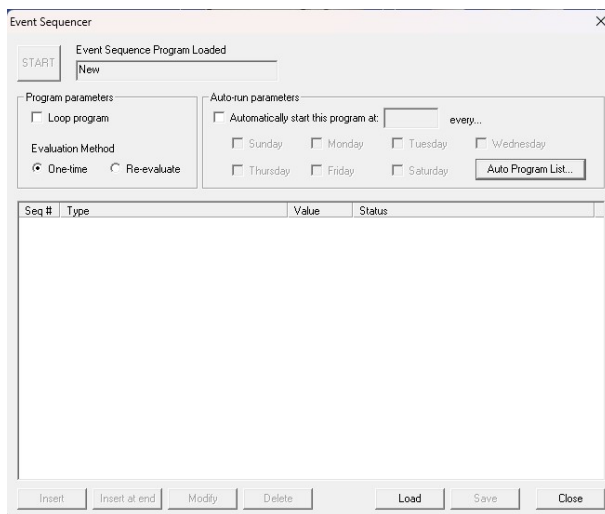
4. Uninstall the previous version of PCAMS

After copying files from C:\PCAMSNT and verifying that PCAMS 7.0 starts and runs without issues, and all T/R and rapper units are configured properly in PCAMS, you may uninstall

the old version of PCAMS using “Uninstall a program” in Windows Control Panel. **It is recommended not to remove the C:\PCAMSNT directory or make a backup copy of it: it still contains a copy of all the PCAMS configuration files.**

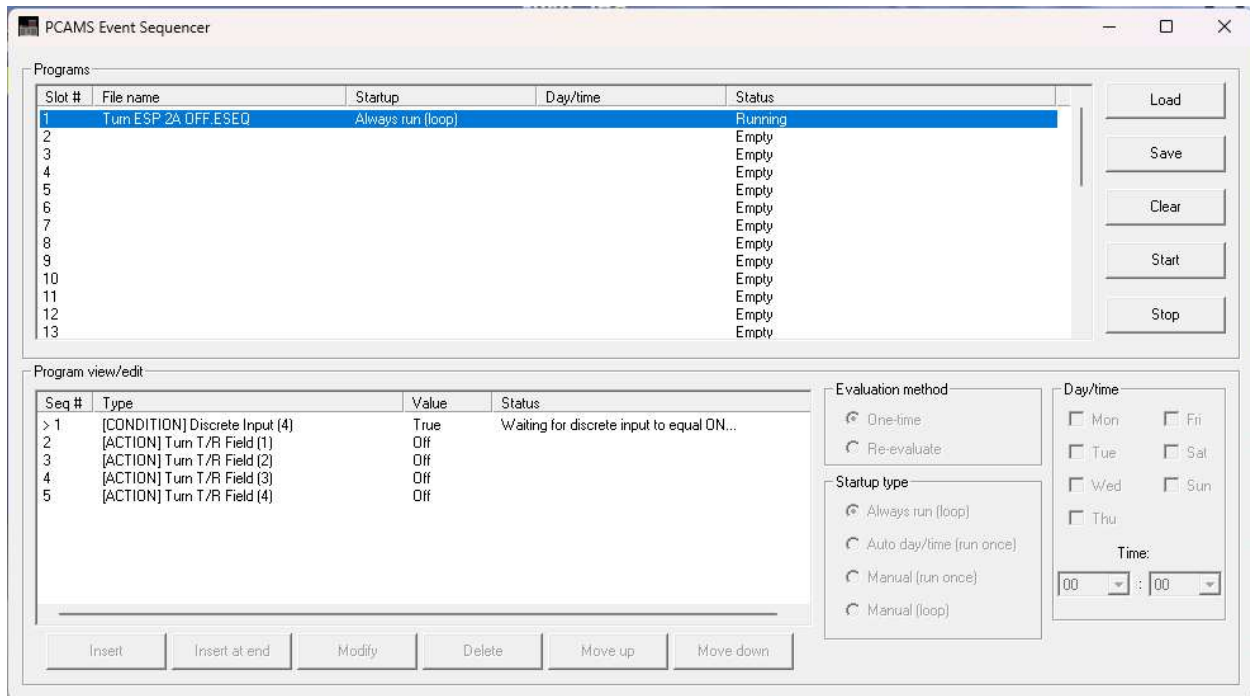
Event Sequencer changes

Event Sequencer has been updated to allow running multiple programs in parallel. Previously, the Event Sequencer window in PCAMS looked like this:



Prior to this release, PCAMS allowed only one program to be run at a time.

The new interface contains 32 program slots in the top section and looks like this:



A program file must be associated with a program slot to run. Note that, after installing PCAMS 7.0, there will be no programs associated with Event Sequencer slots, and all 32 slots will be empty – even if existing programs have been copied to **EventSeqProgs** directory. The association needs to be created manually for each program/slot, by selecting a slot from the list and clicking “Load”.

Although Event Sequencer can load program files from any location, it is recommended to keep them under **EventSeqProgs** for consistency.

Once an existing program has been loaded into a slot (or a new program is created in a slot using the “Save” button), it can be modified and saved. When a program is modified and needs to be saved to file, the “File name” column will show the name of the file with “(modified)” appended to it.

When a program has been modified, the Event Sequencer will not allow it to run until it is saved to file and the “File name” column no longer shows it as modified.

Also, if a program is configured to run automatically and may start at any time, the edit controls will be disabled. To edit the program in this case, you must first click “Stop”. This ensures that the program won’t start while changes are being made. Don’t forget to save and restart the program (if necessary) when you’re done making changes.

IMPORTANT: when migrating Event Sequencer programs from PCAMS 6.x or older, make sure the “Startup type” is set properly:

- **If a program must be running whenever PCAMS is up, set the startup type to “Always run (loop)”. There is no need to bring up the Event Sequencer UI after starting PCAMS. The program will be always running in the background.**
- **If a program needs to be started once a day at a predefined time, set the startup type to “Auto day/time (run once)” and configure days of the week and time when the program should be started up. For an existing PCAMS 6.x program, day/time settings will migrate automatically, but you still need to set the startup type.**

Event Sequencer programs are simple automation scripts. They are not “aware” of other control logic that may be set up in PCAMS via Energy or Baghouse Management. It is possible that T/Rs or Rapper Controllers will be receiving conflicting commands from different modules in PCAMS, or even from multiple Event Sequencer programs – there is no concept of T/R or Rapper Controller “exclusive ownership” in PCAMS at this time. For example, one Event Sequencer program may be trying to set a T/R’s current limit to 10%, while another may be setting this limit to 100%. Because there is no handshaking between the programs, or exclusive ownership of the T/R, commands from both programs will be accepted, and the actual current limit will be determined by which command was received last.

When troubleshooting complex interactions between PCAMS modules or multiple Event Sequencer programs, use the “divide and conquer” approach and determine which module is sending commands to T/Rs or Rapper Controllers.

When an Event Sequencer program executes an action step (e.g., turn T/R on/off), a message is printed to Status Log with an “ESEQ” identifier.